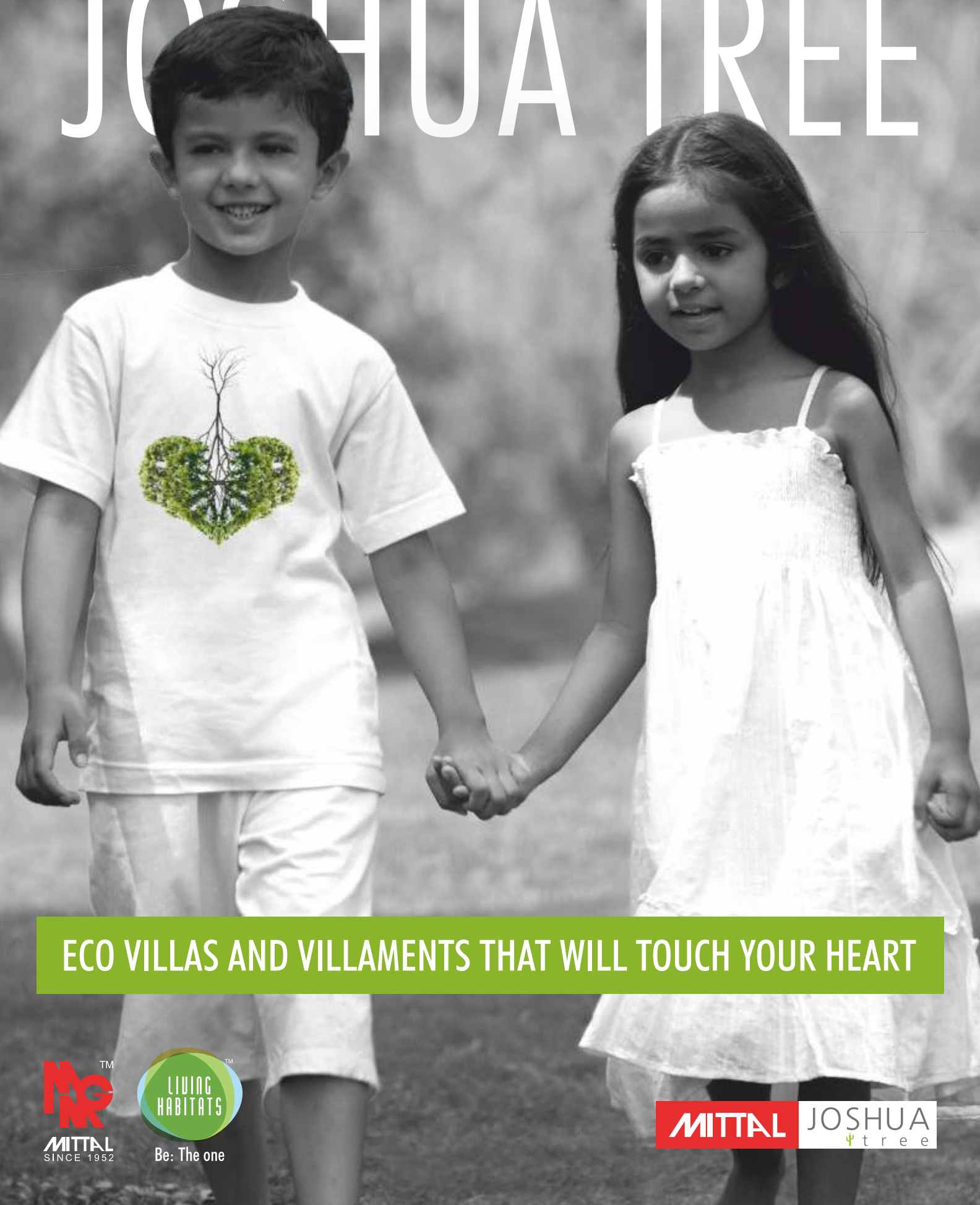


JOSHUA TREE



ECO VILLAS AND VILLAMENTS THAT WILL TOUCH YOUR HEART





Interactive video content

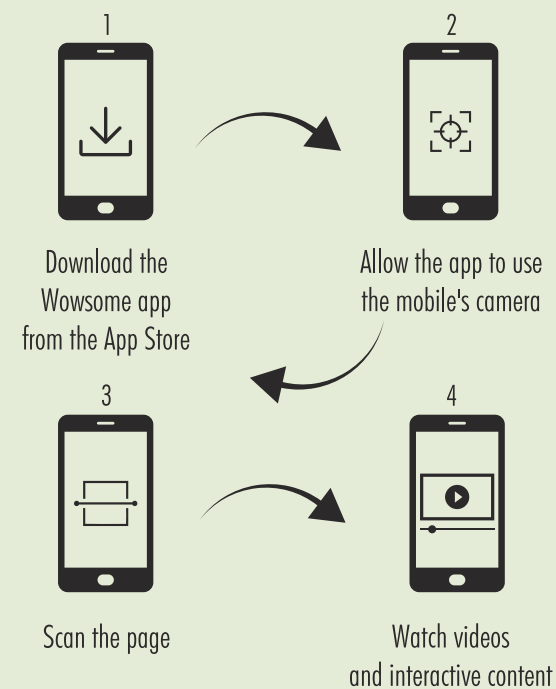


Slide presentations

This Brochure Features Augmented Reality



INSTRUCTIONS



Wherever you see this symbol, all you need to do is scan the photo using the Wowsome app and you will see videos and presentations jumping out of the pages.

Wowsome app

 Green Button: 31st January 2019

 Amber Button: 31st March 2019



Mittal, the pioneers in construction, introduce their sustainable construction division



Be: The one

A company that has eco-consciousness in its DNA

Presenting

THE FIRST CARBON-NEUTRAL VILLA AND VILLAMENT COMMUNITY IN HYDERABAD



42 Luxury Eco Villas and 75 Villaments

At Bhanur, Hyderabad near Shankarpally. Amidst abundant greenery, the project is coming up on a sprawling 10 acres of land.



Villas



Villaments

Sustainable Villas and Villaments

HYDERABAD'S TRULY GLOBAL CARBON-NEUTRAL COMMUNITY

Living Habitats - an offshoot of Mittal presents its sustainable and eco-living project: Mittal Joshua Tree.

Smart villas and villaments near Shankarpally, Hyderabad.

That brings us to the question: What is sustainable?

Sustainable development makes judicious use of every resource. It conserves land, water, plant, and people's efforts. It successfully combines four components: It is environmentally non-degrading, technically appropriate, economically viable and socially acceptable.

Hyderabad's first carbon-neutral community. It means that the carbon dioxide that we bring into the atmosphere by use of electricity, construction etc is offset by planting trees and a host of other environment-friendly initiatives.



Thus, you can be proud that you will be living in one of the rare eco-friendly communities around the globe. Discover the sheer thrill of living at Mittal Joshua Tree.



A home that nurtures the planet



Joining hands to replenish the earth

Say NO to Global Warming

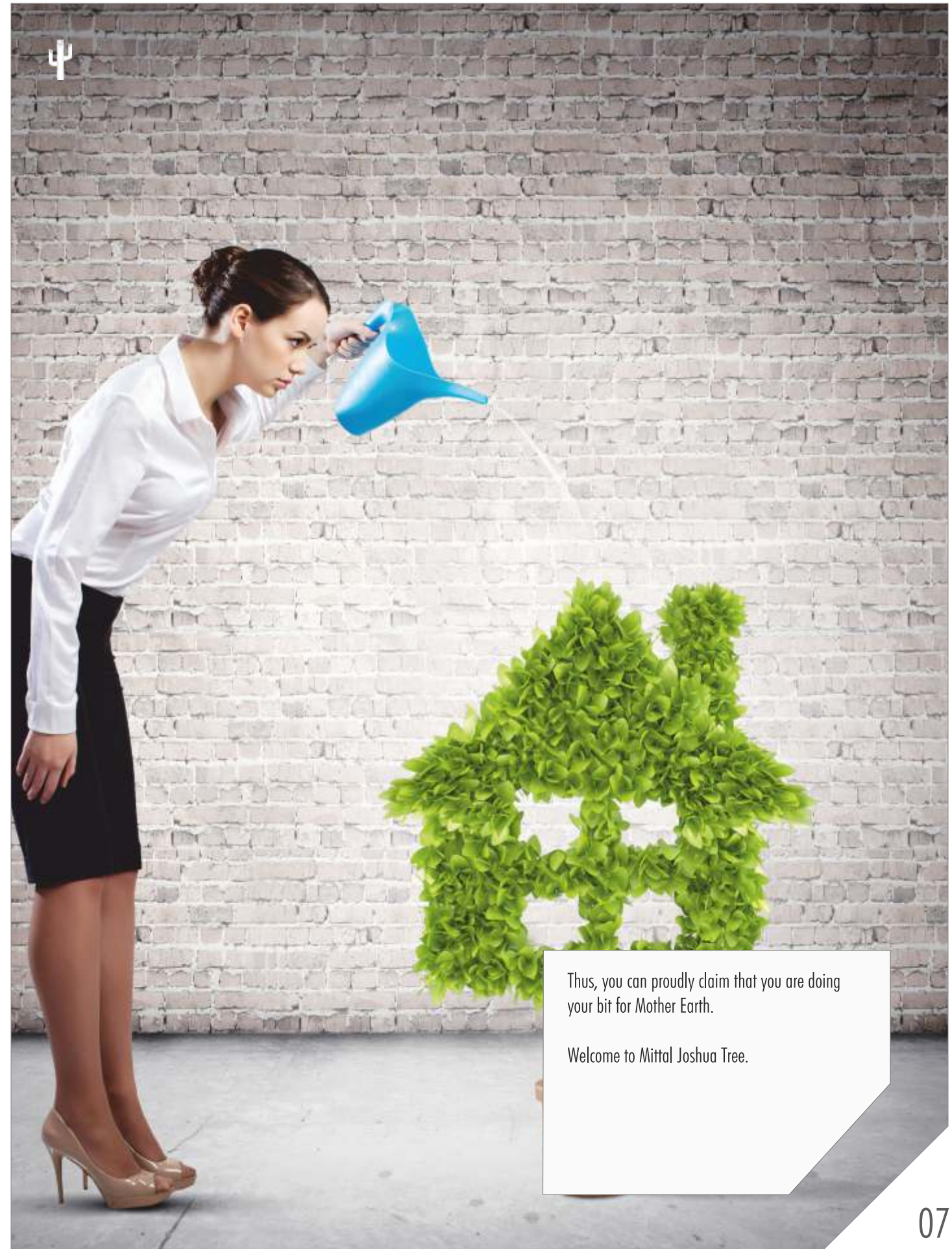
YOUR HOME IS A REFLECTION OF YOUR RESPONSIBLE PERSONALITY

Today's major natural crises prove that we as human beings have not lived responsibly. The dramatic climate changes, the dwindling of earth's green cover and the sheer water shortage, all are consequences of that.

But you want to take action to set that right. You care for the planet. Your homes would be powered by solar energy. You would use energy efficient fixtures and this consume less energy.

Your homes would be built using environment-friendly construction material and you would be part of a community that plants more trees and creates all around energy-efficiency.

You will reduce, recycle and reuse.



Thus, you can proudly claim that you are doing your bit for Mother Earth.

Welcome to Mittal Joshua Tree.



Swimming pool and a host of amenities



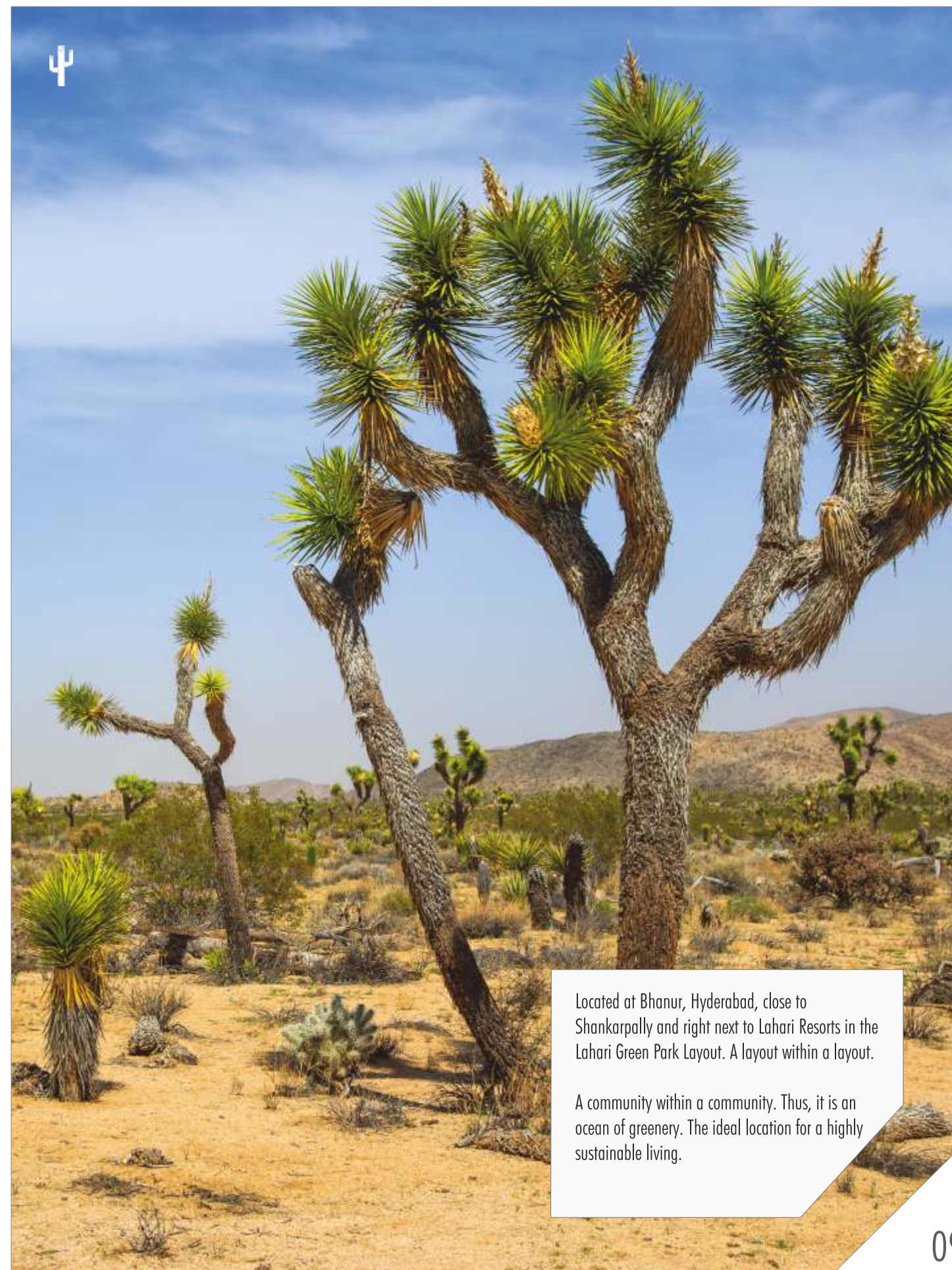
Live amidst greenery

Presenting Garden Homes

LIKE A PRAYER TO THE UNIVERSE

Joshua Trees are found in arid areas. They represent spiritual triumph. These trees can survive harsh conditions, even live without water. The Joshua Tree thus represents the judicious use of resources. Its branches go up high in the air like hands in a prayer. It is as though the tree is praying to the universe to be environment-friendly. Thus, Mittal Joshua Tree - an embodiment of sustainability.

Presenting lush garden homes. Grow your own vegetables in your own home.



Located at Bhanur, Hyderabad, close to Shankarpally and right next to Lahari Resorts in the Lahari Green Park Layout. A layout within a layout.

A community within a community. Thus, it is an ocean of greenery. The ideal location for a highly sustainable living.



Schools & Colleges



Hospitals and Medical Centers

Great Location

GROWING CONNECTIVITY. RICH & SOCIAL INFRASTRUCTURE

Mittal Joshua Tree is nestled in the 800 acre Lahari Green Park, right next to Lahari Resorts. It boasts of a growing, social infrastructure.

Hospitals

Continental Hospitals
Alexandria Hospitals
Citizens Hospitals
Sai Krishna Multispeciality Hospital
Sai Ganesh Multispeciality Hospital

Schools

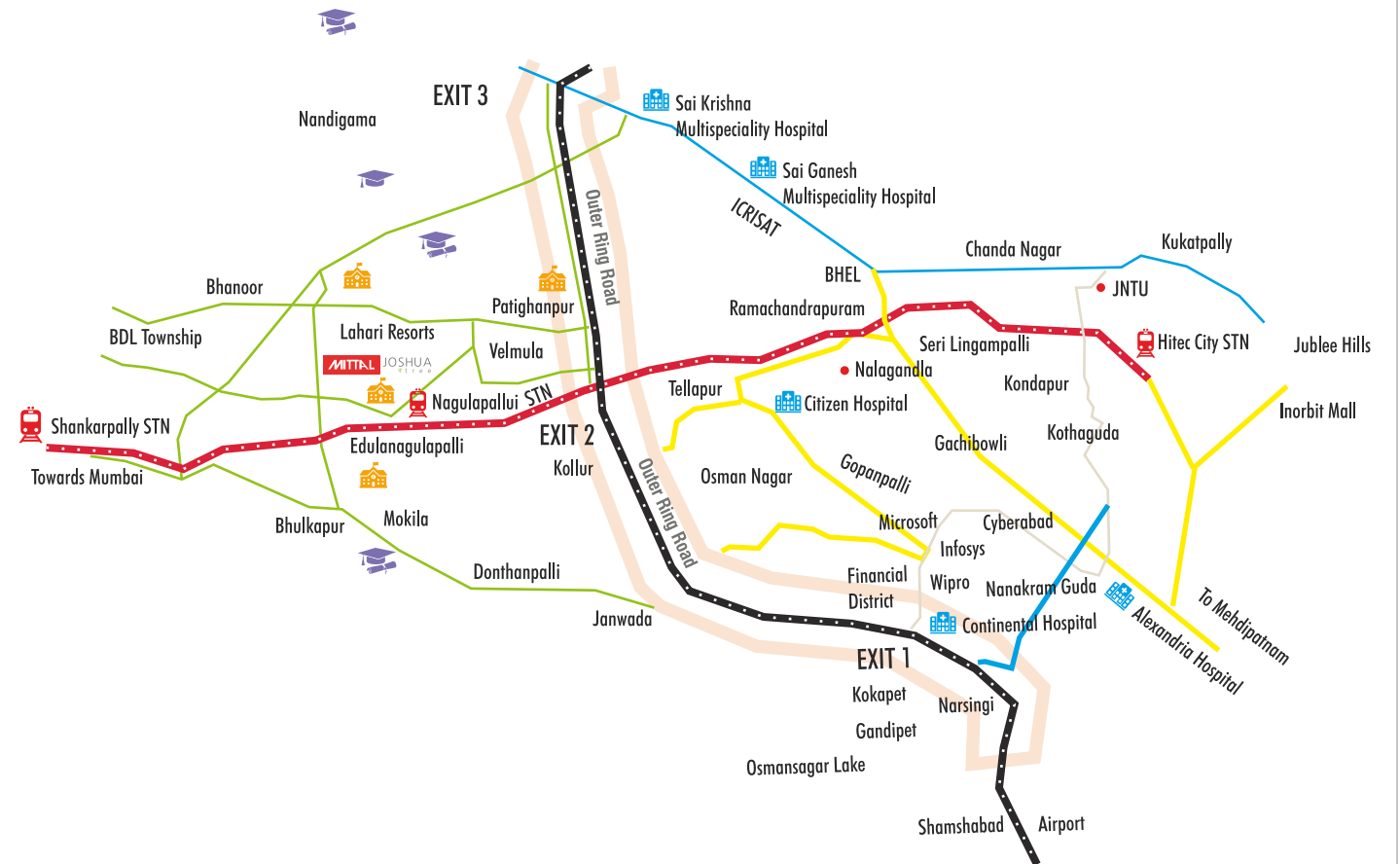
Indus School
Prachin Global School
The Gaudium School
Narayana Co School

Colleges

Patlolla Rama Reddy College of Engineering & Technology
Ramakrishna College of Pharmacy
IIT, Hyderabad
ICFAI Foundation

Airport

Just 45 minutes away



- SCHOOLS
- HOSPITALS
- COLLEGES
- RAILWAY STATIONS

Financial District

Just a 25-minute drive gives you easy access to the best of supermarkets and entertainment spots.

Thus, Mittal Joshua Tree gives you greenery, keeps you far away from the crowd and yet maintains accessibility to the rich & social infrastructure.



Property appreciation



Growth

Great Investment Opportunity

WATCH THE PRICE OF YOUR PROPERTY APPRECIATE

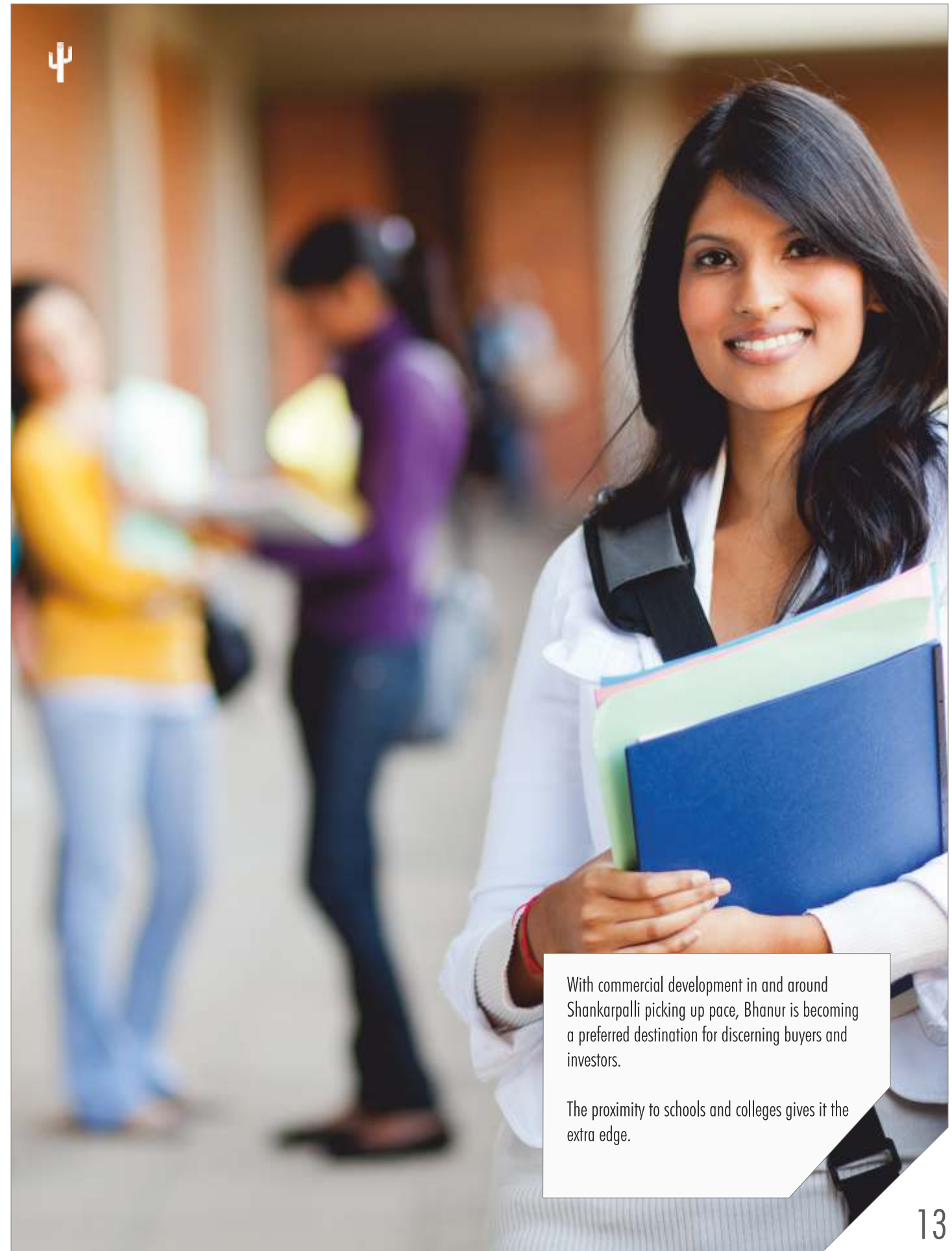
Bhanur, situated near Shankarpally and off Hyderabad's Outer Ring Road (ORR), is well-connected to some of the most popular areas of Hyderabad like Financial District, Mokila, Tellapur, Gopanpally and Nallagondla.

Nagulapally Railway Terminal

Nagulapally Railway Station, which is currently a 1-platform station, is poised to become a major Satellite Terminal with 10 platforms, on 300 acres of land*. This ₹1000-Crore government sanctioned project is already under development and this terminal will service all trains originating from Western India.

Shankarpalli, around 6 km from Bhanur, houses several schools, banks, markets, hospitals and other infrastructure facilities. The location is also easily accessible from the industrial and IT hubs located in Gachibowli and Madhapur, and takes about 30 minutes drive from Wipro circle.

*The Hind India, Dec' 2018



With commercial development in and around Shankarpalli picking up pace, Bhanur is becoming a preferred destination for discerning buyers and investors.

The proximity to schools and colleges gives it the extra edge.

Master Plan



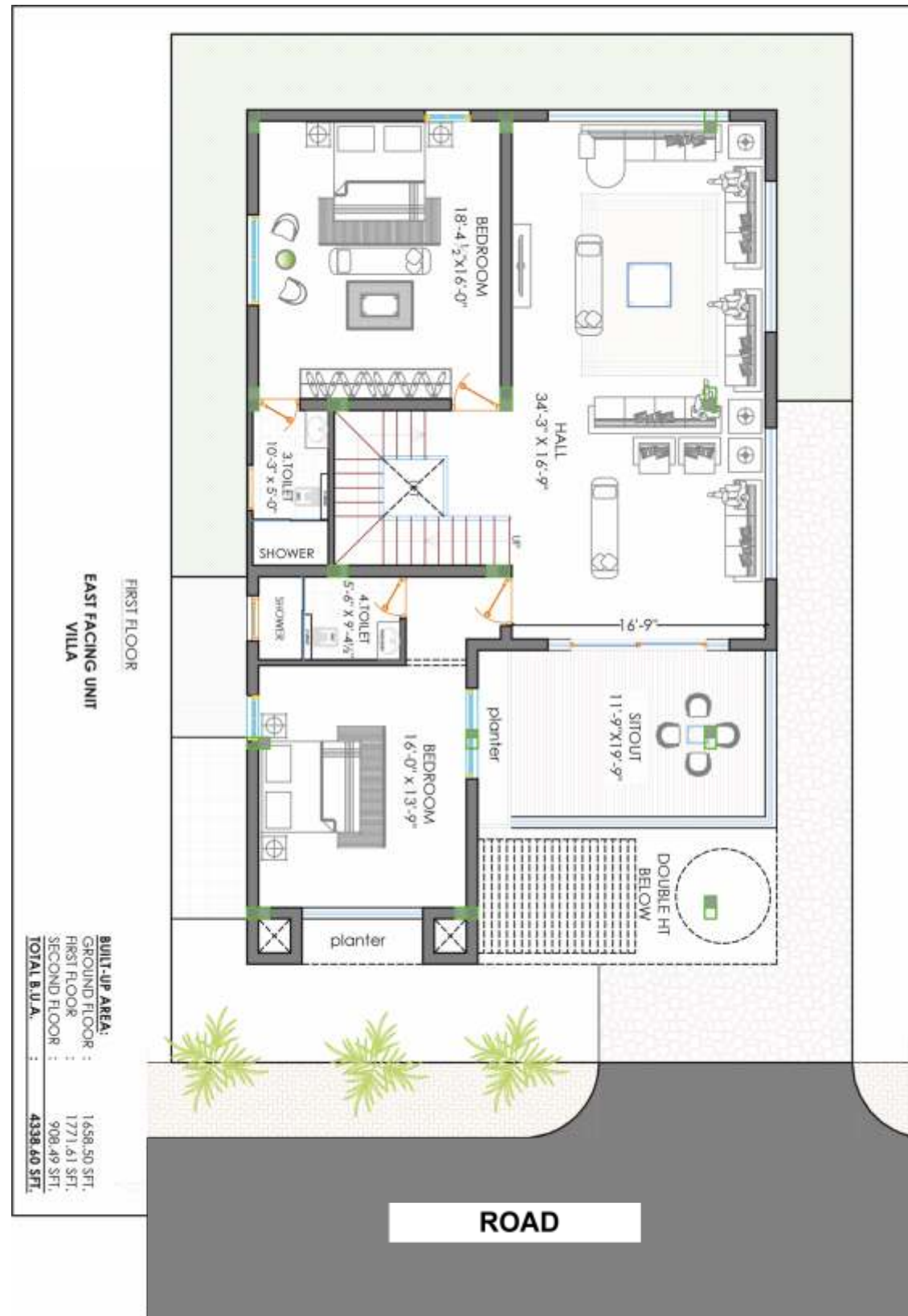
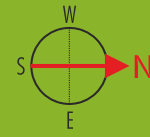
22 East - facing Villas



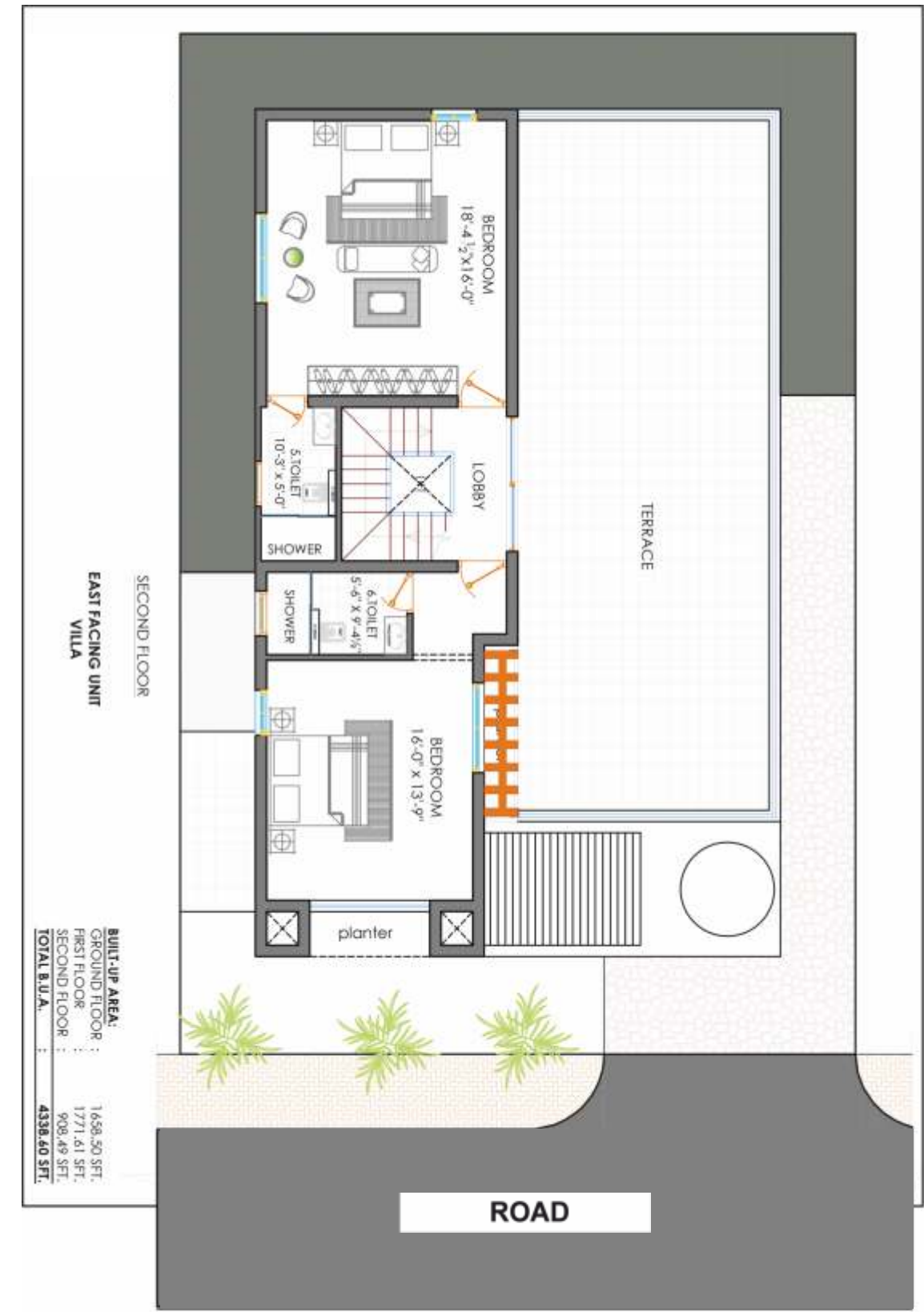
Villas-East Facing: Ground Floor



Villas-East Facing: First Floor



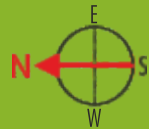
Villas-East Facing: Second Floor



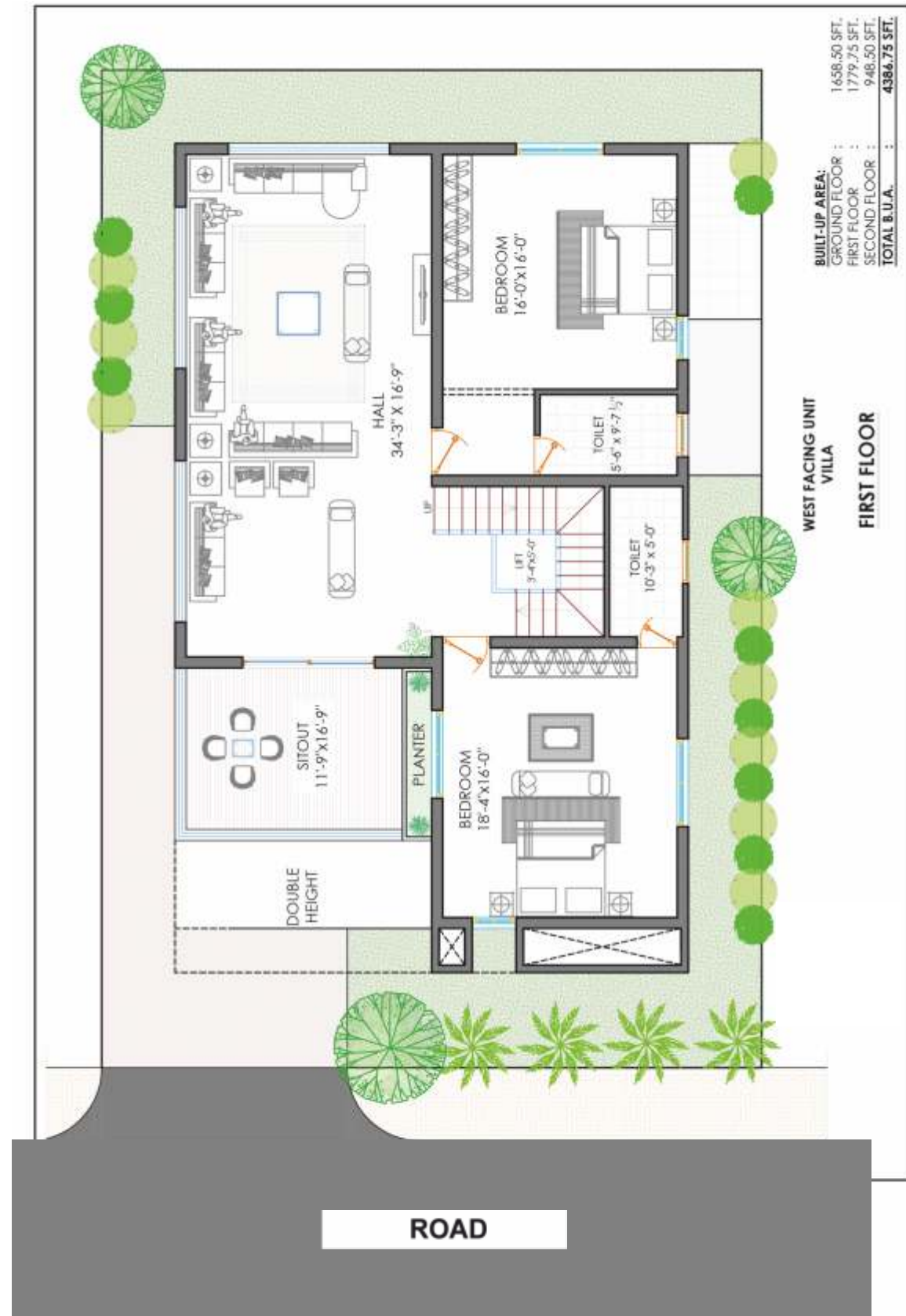
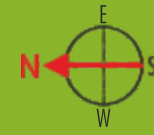
20 West - Facing Villas



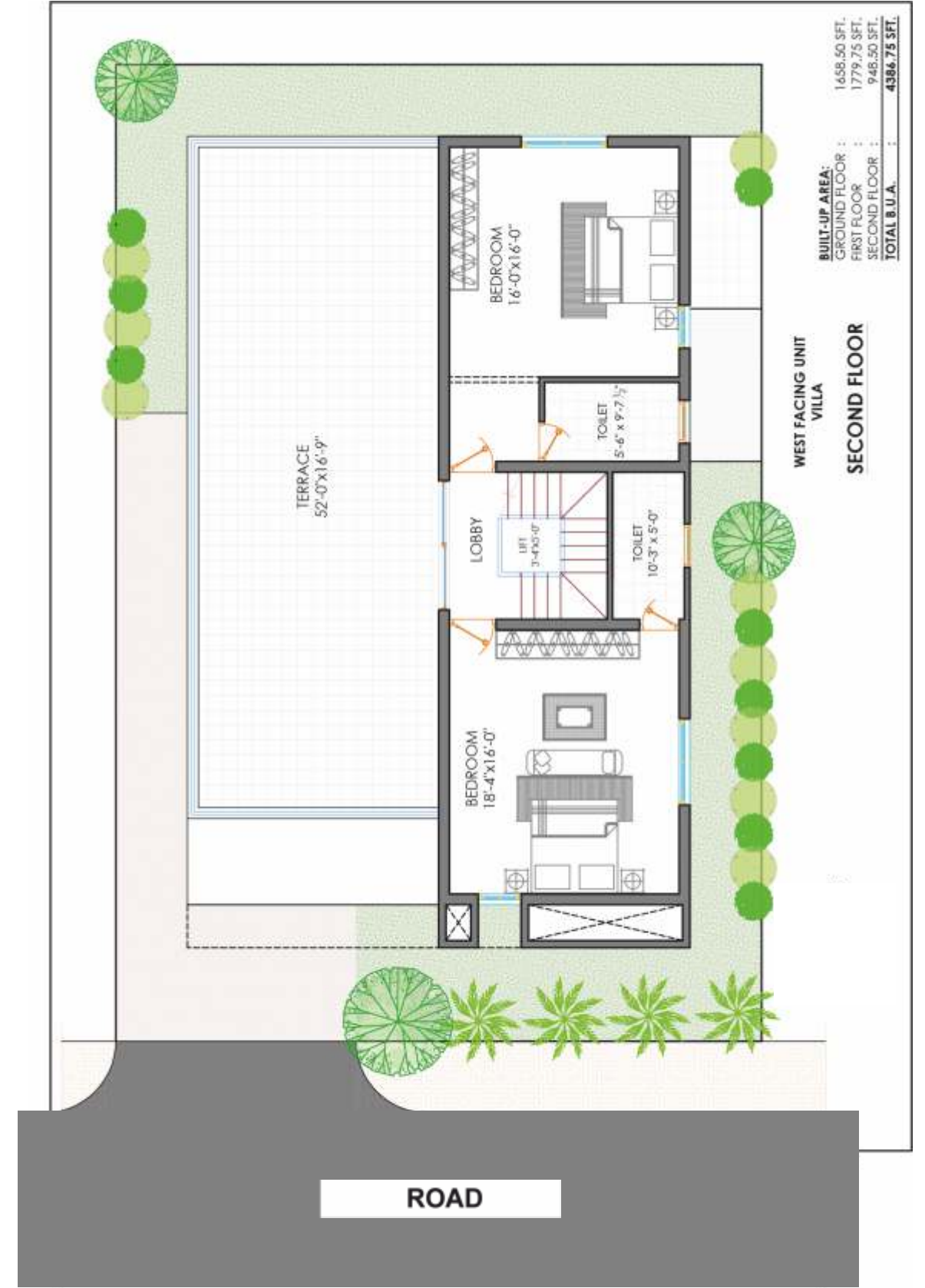
Villas-West Facing: Ground Floor



Villas-West Facing: First Floor



Villas-West Facing: Second Floor





Where tradition comes alive



Where the young and old bond together

Introducing Villaments

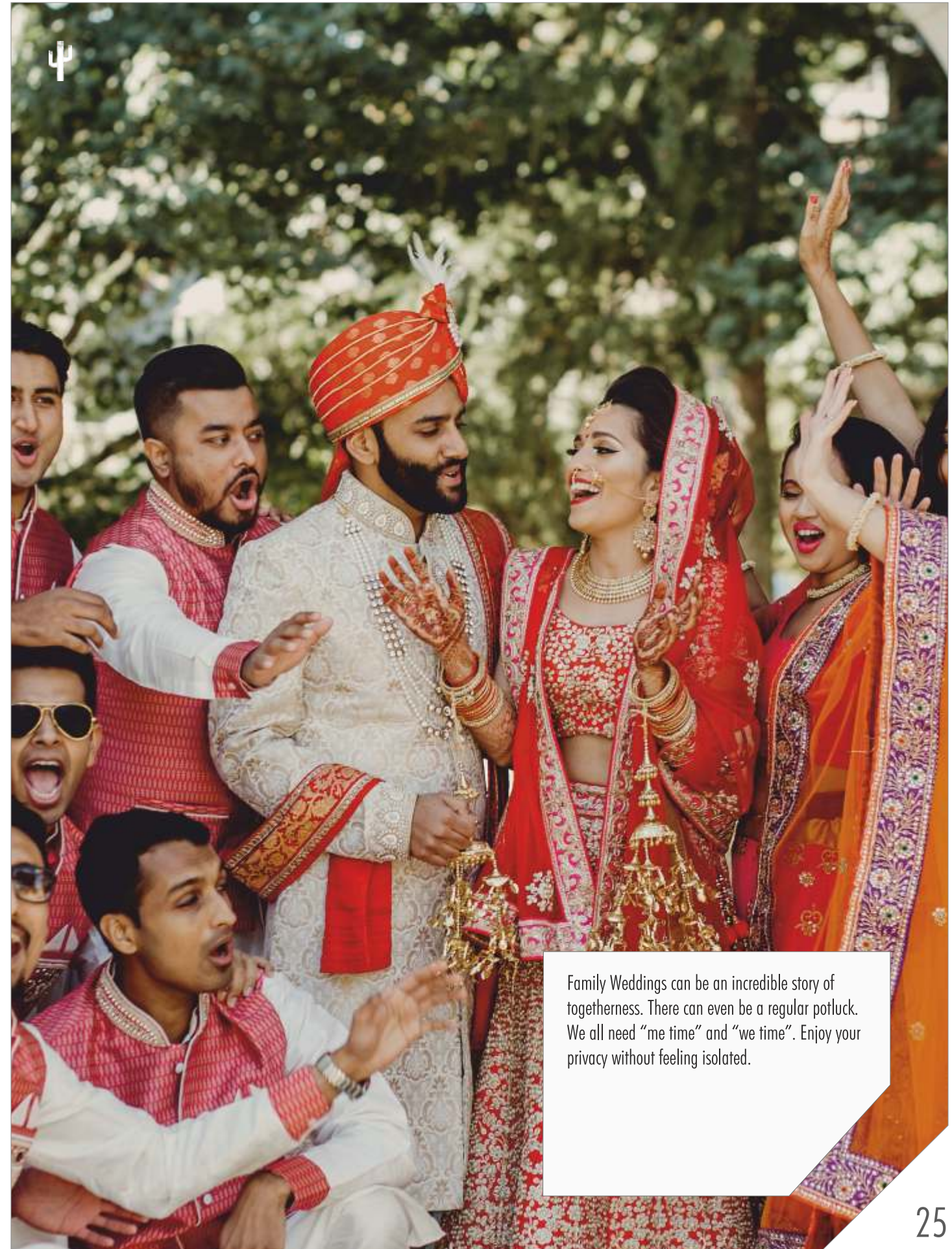
FOR TRADITIONAL FAMILIES THAT LIVE IN TODAY'S MODERN WORLD

Indians live in a cusp; while their education and careers have catapulted them into a modern and global way of life, they feel the need to stay connected with the rich past. They understand the huge cultural anchor that their earlier generations bring. And therein lies the need to create homes that are empathetic to these new necessities.

Which is why Mittals presents the villament at Joshua Tree. Three floors of independent space that can be made to be inter-dependent. For example -

Ground floor for parents | First floor for the sister | Second floor for you.

Now your entire family can be together whenever they choose to be. 3 apartment units in a villament is ideal for a joint nuclear family, providing togetherness with privacy. The common lift to each of the levels is only accessible to family members. Live life king-size. 3 separate helper quarters are located in the basement, because we love and respect the people who serve us.



Family Weddings can be an incredible story of togetherness. There can even be a regular potluck. We all need "me time" and "we time". Enjoy your privacy without feeling isolated.



Festivals make togetherness extra colorful



Celebrate birthdays & anniversaries in style

Villaments: Best of Both Worlds

LIVE INDEPENDENTLY. CELEBRATE TOGETHER.

Whether it is festivals like Diwali or Christmas, Sankranti or Ramadan, fun is in being together. And that is how the villaments at Mittal Joshua Tree can add to the magic. Celebrate birthdays and anniversaries and other special occasions together. Yet each family has the independence it truly deserves.

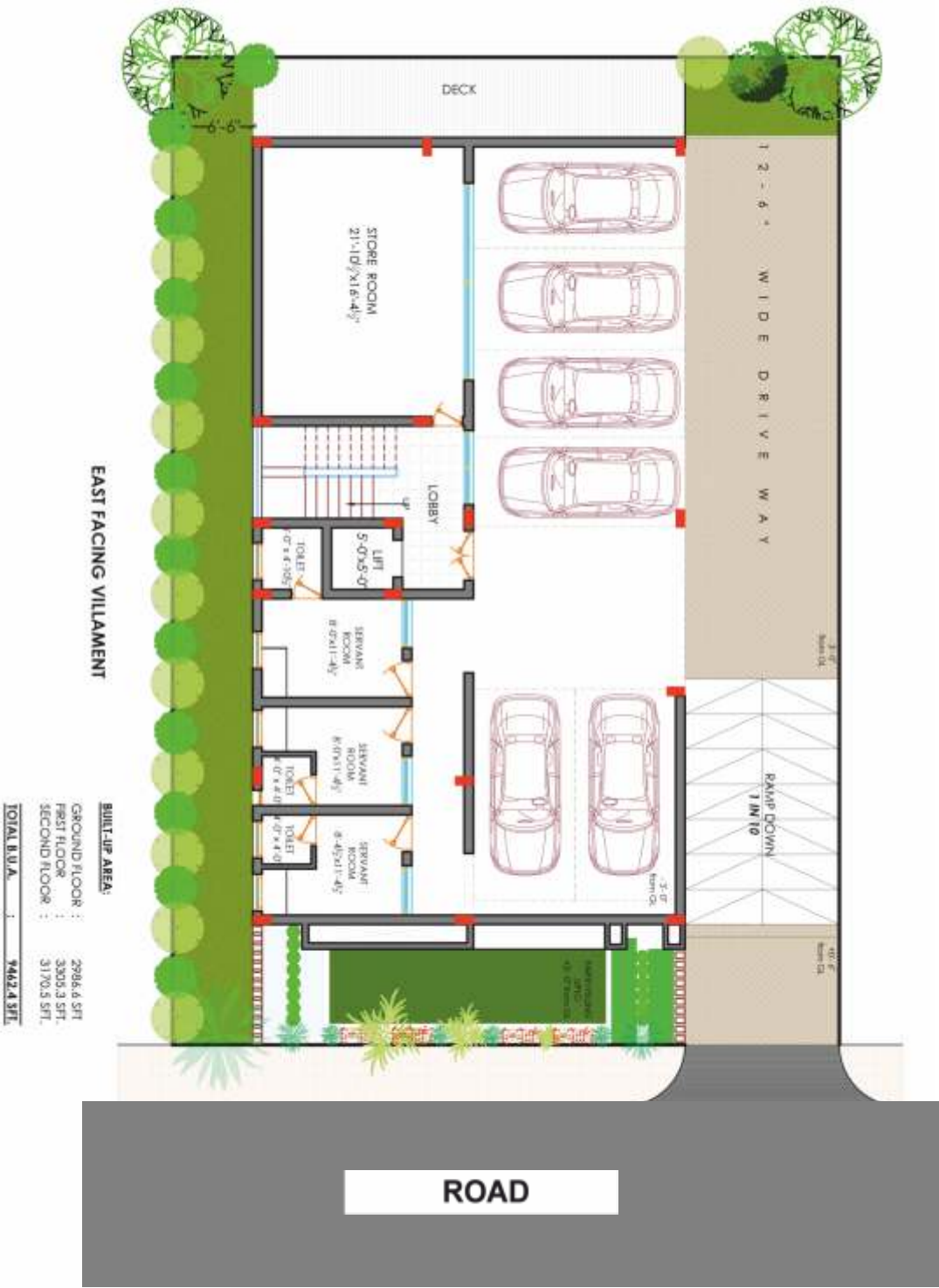


Festivals become magical when surrounded with laughter, cheer and sheer family bonding. Add that special sparkle to life.

13 East Facing Villaments



Villament-East Facing: Cellar Floor Plan



Villament-East Facing: Ground Floor



Villament-East Facing: First Floor



Villament-East Facing: Second Floor



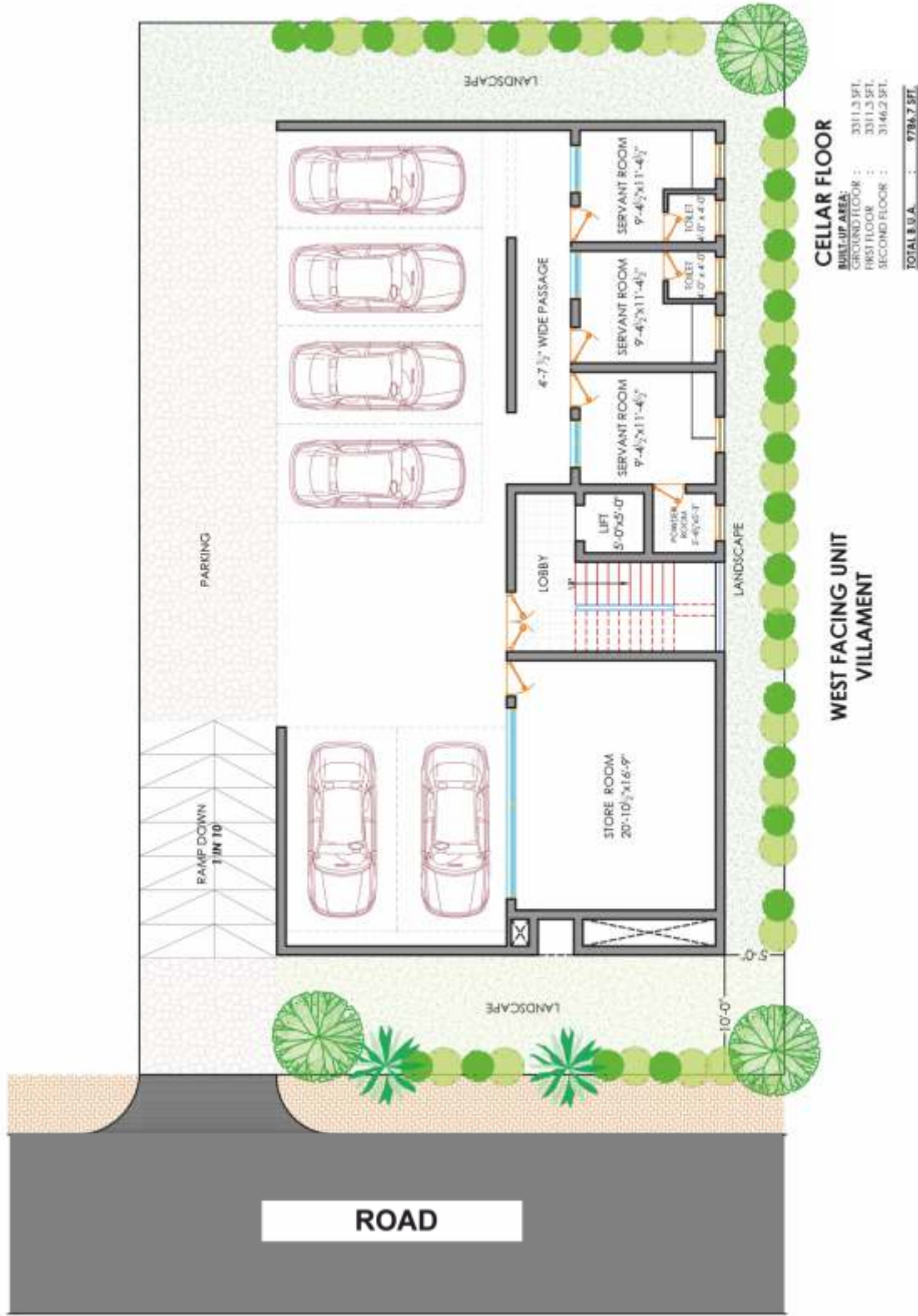
Villament

a) Ground Floor Unit	2986.6 sft built up
b) First Floor Unit	3305.3 sft built up
c) Second Floor Unit	3170.5 sft built up
Total	9462.4 sft built up

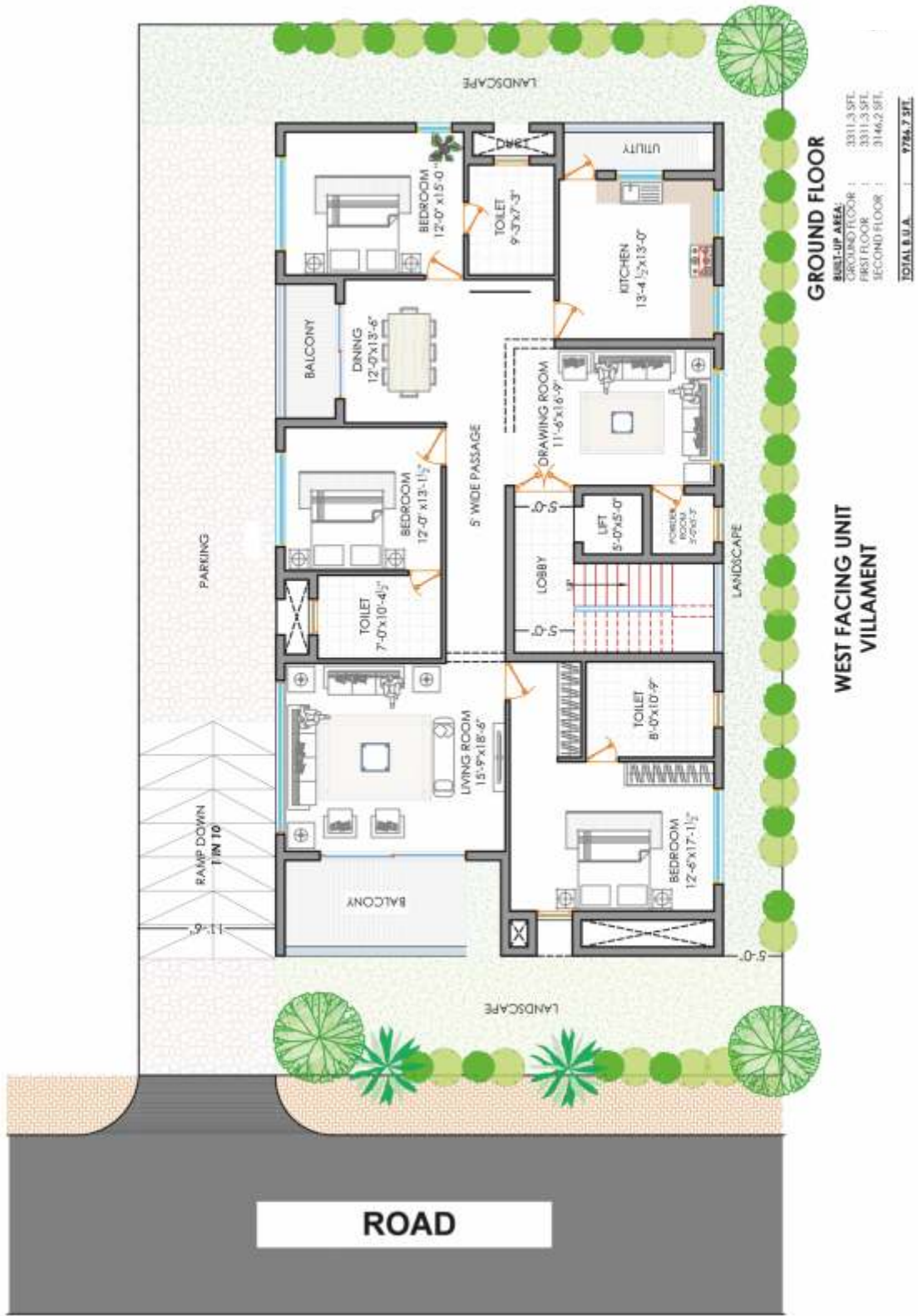
12 West Facing Villaments



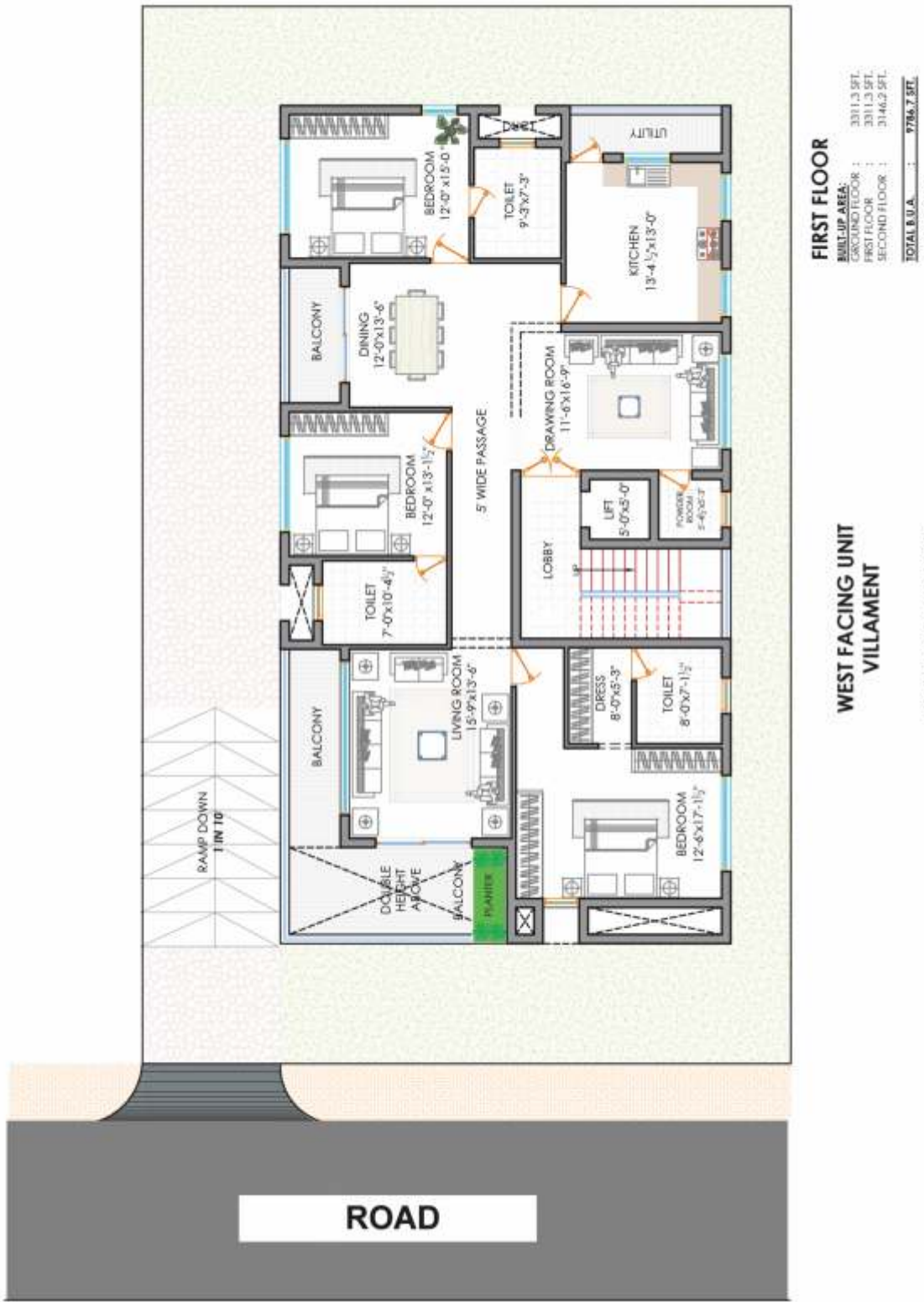
Villament-West Facing: Cellar Floor Plan

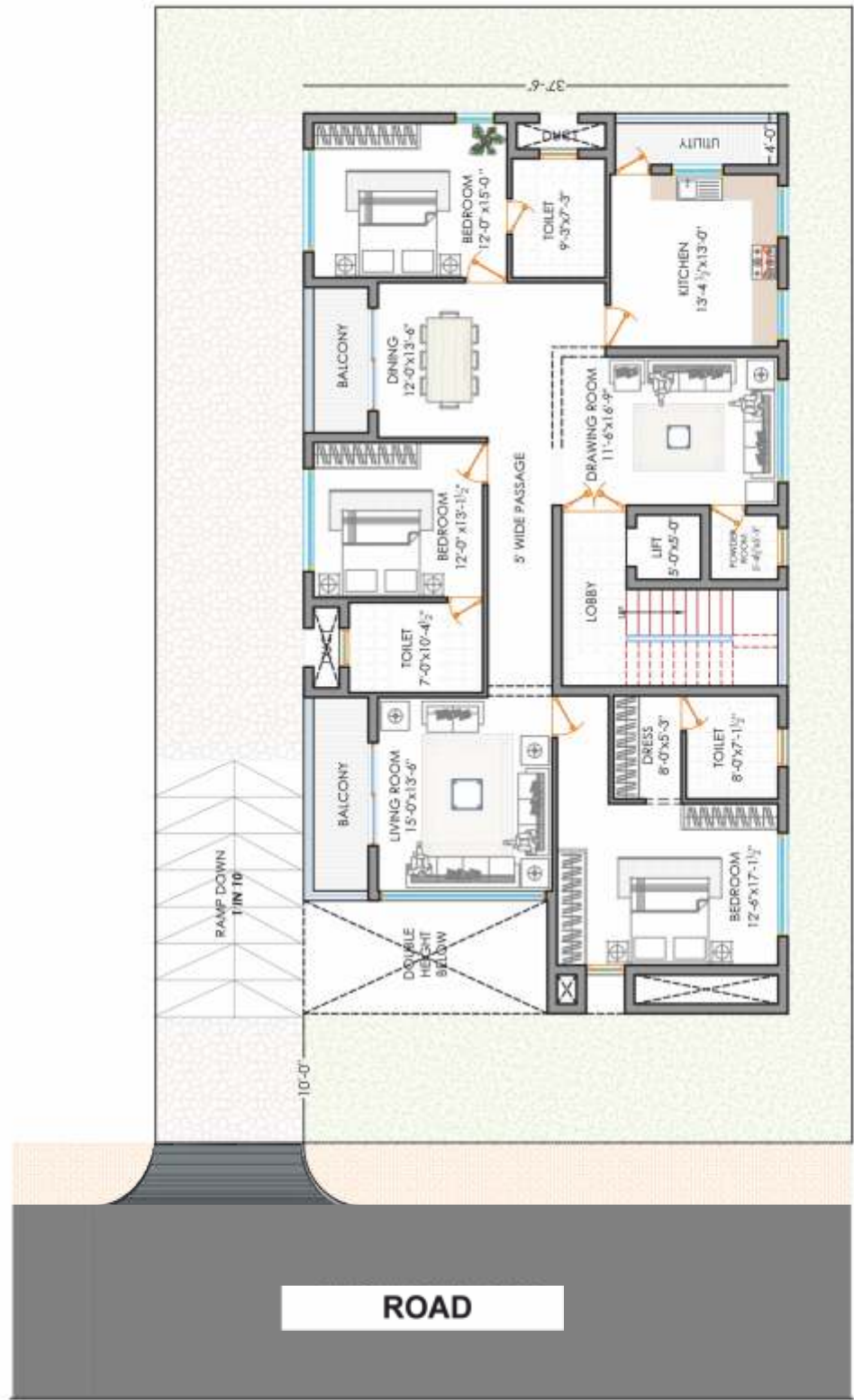


Villament-West Facing: Ground Floor



Villament-West Facing: First Floor





SECOND FLOOR
BUILT-UP AREA : 3311.3 SFT.
GROUND FLOOR : 3311.3 SFT.
FIRST FLOOR : 3146.2 SFT.
SECOND FLOOR : 3146.2 SFT.
TOTAL B.U.A. : 9786.7 SFT.

**WEST FACING UNIT
VILLAMENT**

ROAD

a) Ground Floor Unit	3311.3 sft built up
b) First Floor Unit	3311.3 sft built up
c) Second Floor Unit	3146.2 sft built up
Total	9786.7 sft built up



Mosquito mesh



Cladding wall

Specifications

Structure

- RCC framed structure with cement blocks for all walls
- Anti-termite treatment as per IS standard

Flooring

- Ceramic tiles in all living rooms, bedrooms, kitchen, utility, common areas and domestic quarters
- FSC certified laminate wooden flooring in the master bedrooms
- Acid resistant, anti-skid ceramic tiles in bathrooms and utility room

Kitchen

- Ceramic tile dado of 2 feet above the granite counter in kitchen
- Double bowl single drain steel sink with single lever tap
- Water connectivity and provision for water-purifiers, chimney and exhaust fan

Utility

- Ceramic tile dado of 4 feet height in utility room

Toilets

- Well-designed layout with wet and dry areas
- Ceramic tile dado of 7 feet in all bathrooms
- Granite counter top with wash basin and chrome plated (CP) mixer taps of RAK / Jaquar make or equivalent
- EWC with flush tank of RAK / Jaquar make or equivalent
- Handmixers and shower heads of RAK / Jaquar make or equivalent
- Exhaust fans

Internal Doors

- Main door - 8 feet high solid timber door with architrave
- Other internal doors - 7 feet high with wooden frames and flush shutters

Windows

- UPVC windows with mosquito mesh

Painting

- Textured external walls and smooth finish internal walls coated with Zero VoC external and internal acrylic emulsions

Electrical & Connectivity

- All electrical wiring concealed with PVC insulated copper wires with modular switches
- Switch boards with modular switches and sockets
- Sufficient power outlets and light points provided
- Sufficient power outlets and light options provided
- ELCB and individual meters provided for all villas and villaments
- TV, Telephone and Internet points provided in the living rooms and all bedrooms

Lift

- Lift in villaments
- Provision for lift in villas

Security

- Community secured with a compound wall and manned security personnel
- Video phone connectivity to security cabin and activity area

Sustainability Features

- 3 KVA solar grid-tied electrical system for individual villas and villaments
- 1 KVA solar water heating system for individual villas and villaments
- Phytoid natural water treatment system
- Urban farming with vertical and terrace gardens
- Composting of bio-degradable waste. Non bio-degradable waste to be disposed off responsibly
- Materials efficiency measures
 - + Cement - PPC instead of OPC
 - + Non - polluting river sand
 - + Concrete blocks with high fly-ash component

Inverter Back-Up

- 4 hour inverter back up for individual villas and villaments

Centralized Water Supply

- Centralized underground water lines with individual villa and villament water storage





Kids' Play Area



Kids' Pool

Recreation Unlimited

CLUB HOUSE

Half Olympic length 3-lane lap pool

A 23,000 sft state-of-the art club house building

A sky-deck restaurant

In addition to climate-responsiveness and design features, wellness will be the main criteria. The focus would not only cover recreational activities, but also foster enhanced interaction with community members in order to re-energize, de-stress and feel good holistically.



Spending a carefree day with your child, or having a chat with a neighbour, intense social engagements or your daily personal space for reflection and introspection. Wellness requires a healthy mix of personal, social and familiar.



Banquet Hall

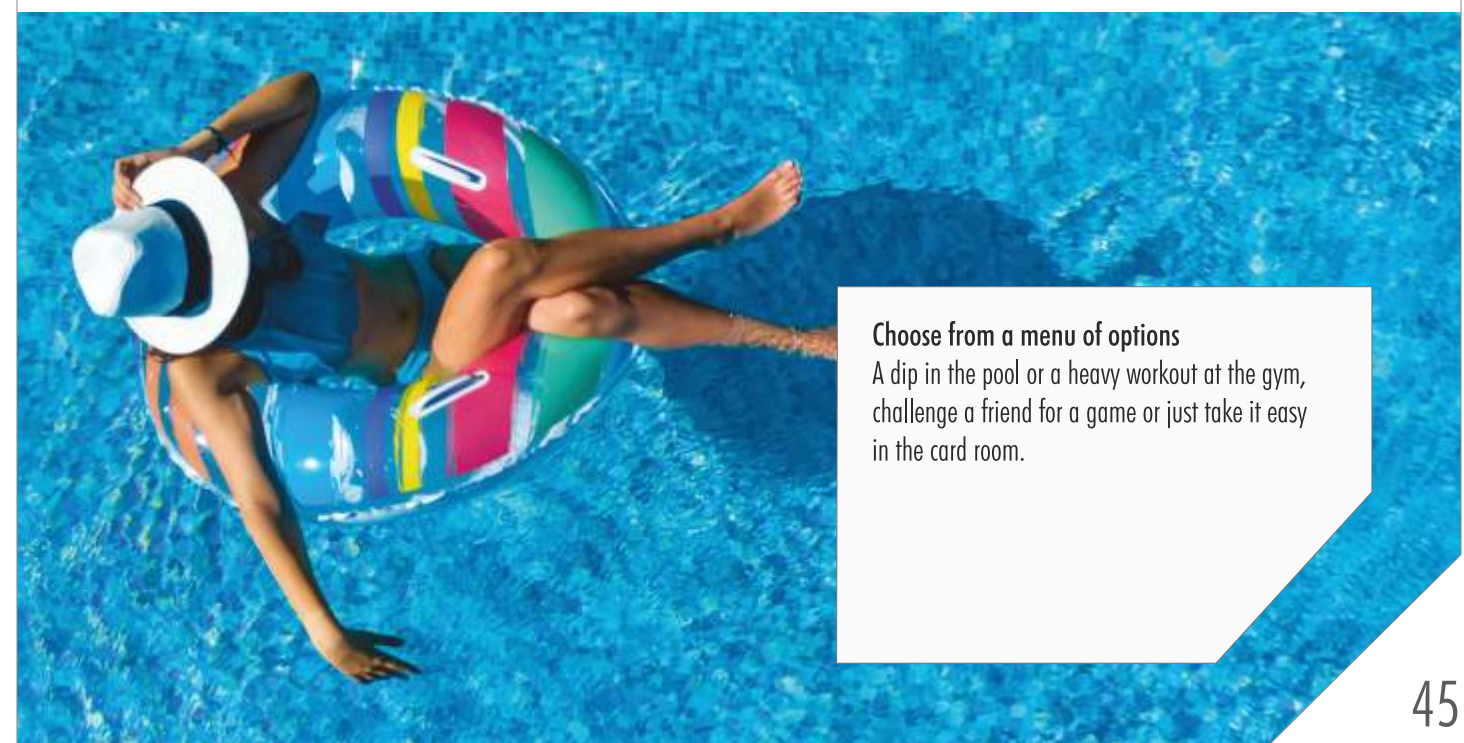


Spa

Living Healthy

CLUB HOUSE

- 4 storied club house with top deck restaurant
- Children's play area
 - Children's pool with changing rooms
 - Skating rink
 - Bouldering
 - Sandpits, Playpens & Play-Towers
- Reception area
 - Cafe/Lounge
 - Banquet Hall
- Spa
 - Massage rooms
 - Separate steam room for ladies and gents
 - Separate showering and changing rooms
- Fully equipped gymnasium
- Yoga studio & Zumba fitness center
- Card room
- Carrom & TT room
- Billiards and Snooker room
- Lodging and boarding
 - 6 Double Bedrooms for guests of Mittal Joshua Tree
- Full-fledged Business Center
 - 6 conference rooms
 - Open work spaces
 - Internet access bays
 - Library & Pantry
- Outdoor sports
 - Large open play areas
 - Tennis court
 - Badminton court
 - Volleyball cum Basketball court
 - Cricket practice pitch with nets
 - Squash court
 - Lap pool & recreational pool with changing rooms



Choose from a menu of options
A dip in the pool or a heavy workout at the gym, challenge a friend for a game or just take it easy in the card room.



Recycled water for your kitchen garden



Grow your own vegetables

Terrace Garden

INSTRUCTIONS IN ORGANIC FARMING

Your kids will also be involved in growing some of their own fruits and vegetables. Planted in vertical or terrace or kitchen gardens, these will be grown with compost created onsite from wet waste and recycled grey water pumped by solar power. You can eat fresh produce you have grown, or barter for different fruits and vegetables grown by your neighbours. Suffice to say, gardens also reduce the ambient temperature of the whole project.



Professional farmers will give you a helping hand with your vegetable gardens. The community will be surrounded by a beautiful patch of organic farms where you can buy your own vegetables. Only the excess organic produce will go to the stores.



Organic, home grown vegetables



The barter club meet - every month

Barter Club

BE PART OF A GREEN COMMUNITY

Mittal Joshua Tree is a green community. Bringing to you a unique concept called the barter club.

Every week, there will be a barter club meet where residents of the community can exchange produce: vegetables, fruits, herbs, pickles, juices and more. So you grow amazing radishes and your neighbor grows aloe vera. Time to exchange them through the barter club. It is a great opportunity to meet your neighbors and bond with the community.



Living Habitats will help promote the barter club. You have excess produce, we help you reach your produce to the organic market. We will conduct regular educational sessions on gardening and all things sustainable. You too can reach out and impart knowledge to the community and nearby villages. That's bliss. Redefined.



Design idea: Contemporary & classy bedroom



Design Idea: Traditional & timeless living area

Walkthru of Mittal Joshua Tree

BROWSE THROUGH OUR PROJECT FROM THE COMFORT OF YOUR HOME

Mittal Joshua Tree gives you the latest Virtual Reality experience. Our VR app will give you an interactive view of the project even before we build it.

Now you need not travel to our site (although the verdant, pollution-free drive is worth it). Instead, check out the site through an impressive walkthru from the comfort of your smart phone, tablet, desktop or a VR Headset.



Unlike a video walkthru that is linear, you are in full control here. The built-in hotspots allow you to wander through the site and see it for yourself. Decision making has never been so easy.



Design Idea: Earthy colours, cozy ambience

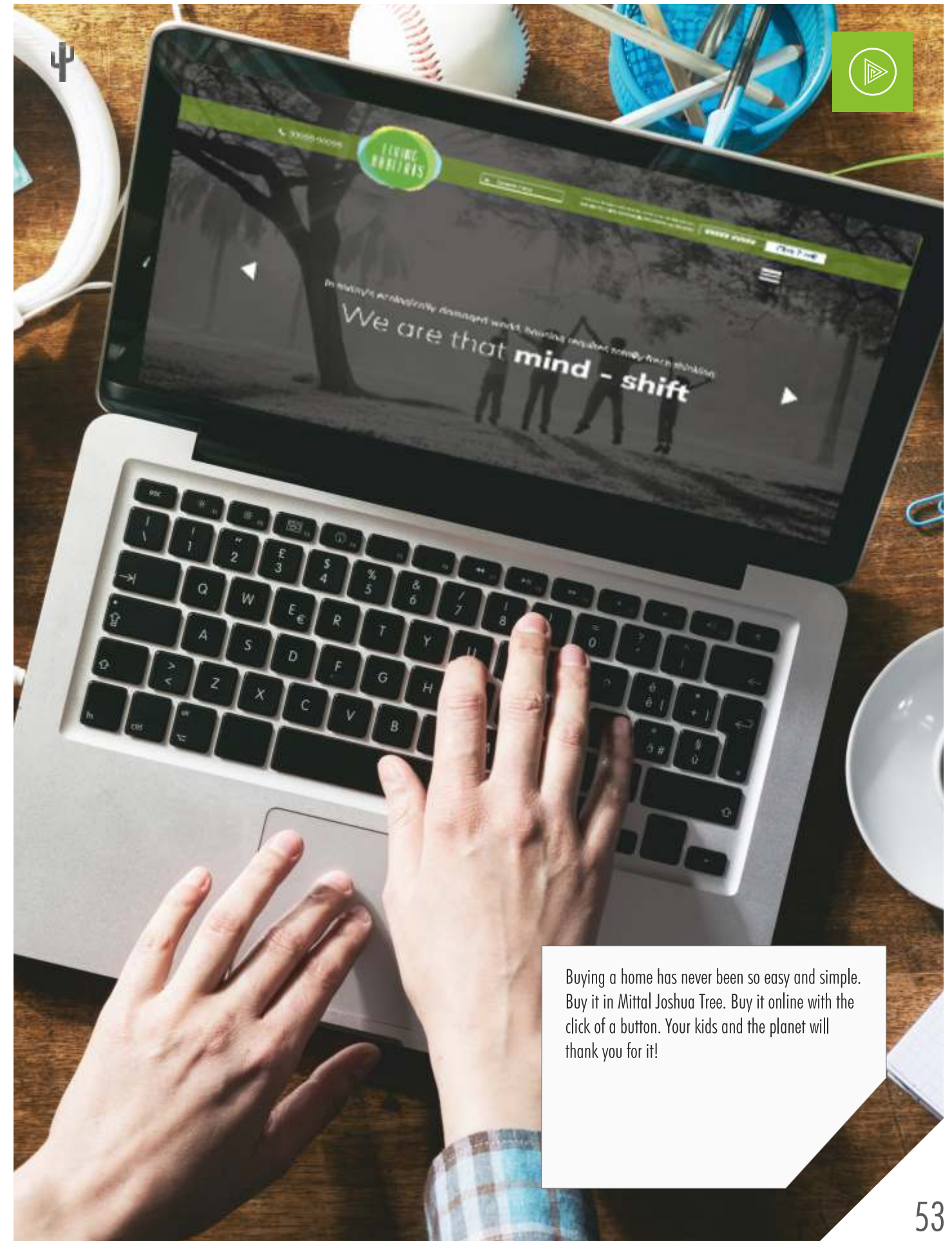


Design Idea: Elegant & comfortable nook seating

Just Pay Rs. 10,000 and Book Your Dream Home

SELECT YOUR VILLA OR VILLAMENT ONLINE:
NO CONDITIONS APPLY

Like many other firsts, Mittal Joshua Tree gives you the option of booking your villa and villament online. Just get into the immersive virtual walkthru and identify the unit that you want. Finalize it and book it online by paying a simple token advance that is fully refundable. No conditions apply. Our executives will come and give you a full demo - online or even offline in the comfort of your own home. Your registration will stay active for a pre-stipulated time period.



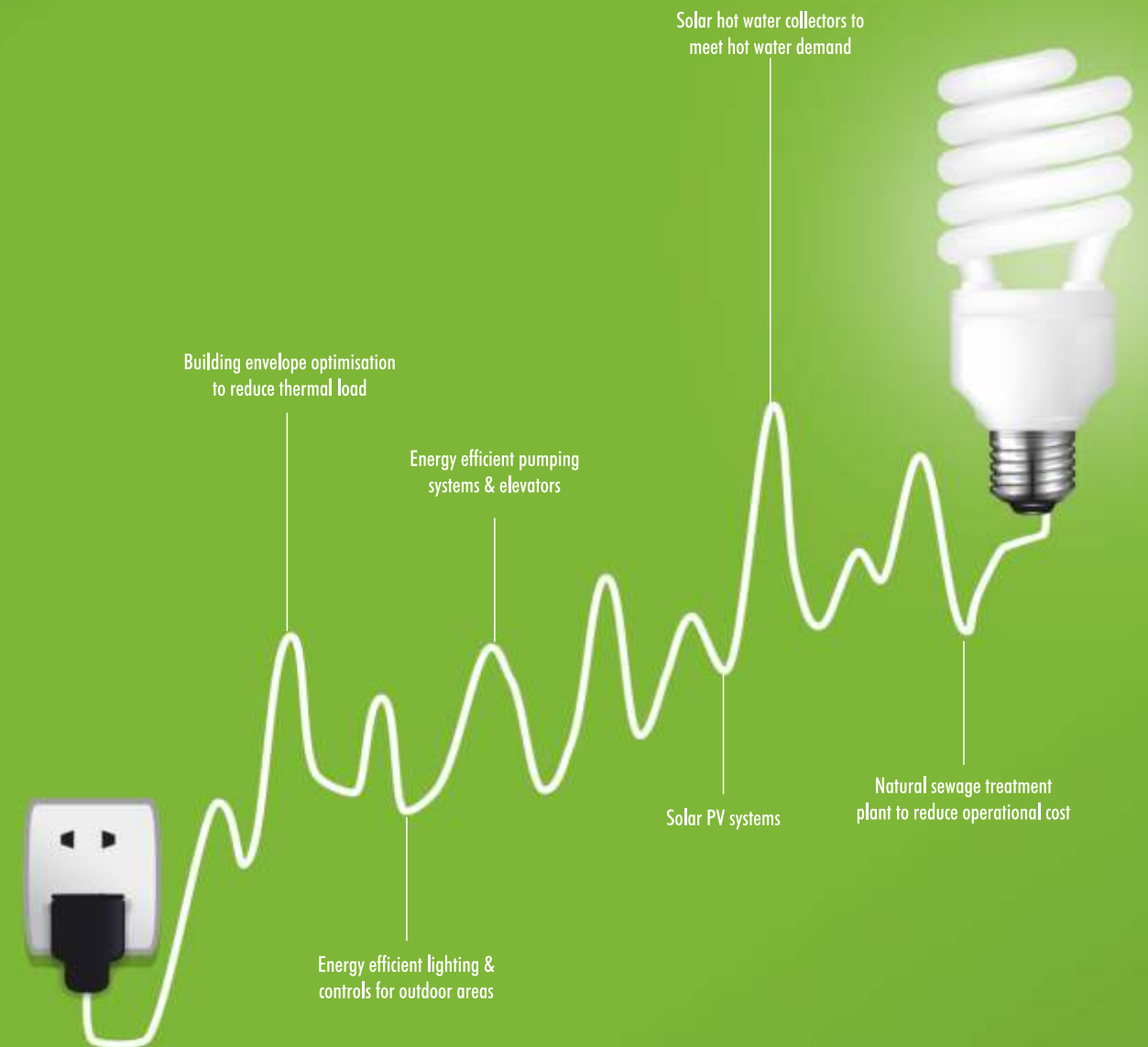
Buying a home has never been so easy and simple. Buy it in Mittal Joshua Tree. Buy it online with the click of a button. Your kids and the planet will thank you for it!

ENERGY SAVINGS

The concept of energy savings also extends to saving through solar energy. This could well translate into electricity savings of Rs. 7292/-* per month compounding to an annual savings of Rs.87,505/-.

This means the effective savings on maintenance charges would be significantly reduced. And going forward, the savings can become a corpus, making maintenance charges virtually NIL over a period of time.

*Smarter Dharma (2018) [Eco-engineering Mittal Joshua Tree]. Unpublished scientific paper.



65%* energy savings to be realised from day one by installing energy efficient lights and appliances for indoor areas and smart metering alongside other energy optimisation and savings measures.

*Average energy unit rate calculated @ Rs 8.6 for diesel generator and grid supply

WATER CONSERVATION APPROACH

Mittal Joshua Tree has an abundance of water resources thanks to being in a green belt. But our philosophy of judicious use of resources has translated in delivering savings to you through smart water conservation. Every year you can save approximately Rs.18000/-* on water alone. And when compounded with the savings on fruits and vegetables that are community grown, using recycled water and in-house composting, the savings increase manifold.

*Smarter Dharma (2018) [Eco-engineering Mittal Joshua Tree]. Unpublished scientific paper.



💧 Daily reduction in per capita water demand by 69 L*

🚰 Daily reduction for community fresh water demand by 67 KL* or 11 water tankers

₹ Monthly monetary savings per unit = ₹1425

A mobile app will give access to the water and energy units you are saving through conscious living.

*Simulation based projected savings, considering NBC demand -of 135 liters per capita per day



Strategic Alliance

CONSULTANTS AND PARTNERS

Living Habitats is developing Mittal Joshua Tree in collaboration with Vyom Infra, a Hyderabad based infrastructure company which has expertise and bandwidth to create enduring landmarks in Hyderabad.

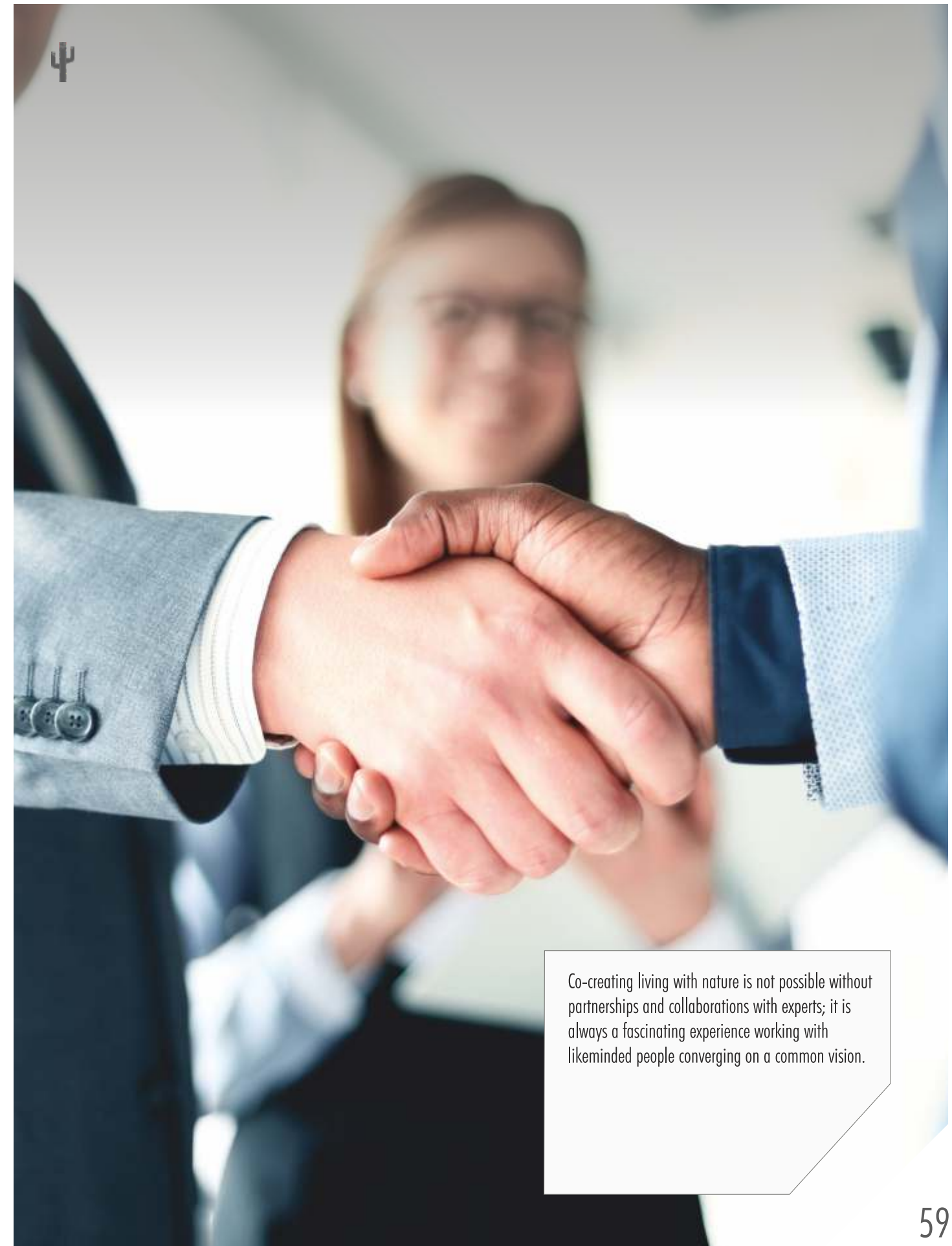
Nasir & Associates, a full service architectural firm based out of Hyderabad, strives to produce work that is innovative, and practical while keeping in mind the social, environmental and aesthetic issues relevant to the project. Over the decades, they have gained extensive experience working with private industry and government bodies alike.

Combining expertise with artistic judgement, renowned Mumbai based architectural firm NPAPL, has designed the innovative Mittal Joshua Tree club-house and recreational spaces that reflect style, functionality and perfection.

Smarter Dharma brings together a platform of engineers and architects, environmentalists and conservationists, energy and water technologists to form the core of the team that has sensitively eco-engineered Mittal Joshua Tree, conforming to stringent parameters for environmentally sensitive design, water and energy conservation and waste management. It is possible that this may result in Mittal Joshua Tree being eligible for lower property tax and carbon credits. But the greatest satisfaction comes in knowing that we're leaving behind a better world for our children.

SAGE Sustainability is a certified B-Corp company, collaborating with Living Habitats to ensure business decision making is positively impacting workers, customers, suppliers, community and the environment at large. It steers companies to adopt leading cutting edge environmental, social and governance frameworks in the real estate sector and report and share progress to inspire others to take action.

Religiate is a specialist brand consulting company for eco and sustainable brands. Offering cutting-edge digital, design and branded content solutions to cut through the media maze.



Co-creating living with nature is not possible without partnerships and collaborations with experts; it is always a fascinating experience working with likeminded people converging on a common vision.



Information & Technology Hub



Upcoming infrastructure developments

Investments

INVESTMENTS THAT WILL APPRECIATE WITH CONNECTIVITY

Bhanur, situated close to Hyderabad's Outer Ring Road (ORR), is well-connected to some of the most popular areas of Hyderabad like Shankarpally, Gopanpally, Nallagandla, Tellapur and Mokila. Shankarpally, about 6 kms from Bhanur, houses several schools, banks, markets, hospitals, and other infrastructure facilities, including the upcoming Naganapally Train Terminal. The location is also easily accessible from the industrial and IT hubs, located in Gachibowli and Madhapur, and takes about 30 minutes from Wipro circle. Upcoming infrastructure developments, including the proposed 338-kilometre-long Regional Ring Road, will further improve the connectivity of Bhanur with main districts of Hyderabad, which is expected to heighten real estate investments in this emerging locale.



With the commercial development in and around Shankarpally picking up pace, Bhanur is becoming a preferred destination for discerning buyers and investors.



Organic vegetables



Fresh vegetables

Grow, Eat and Live

CARBON NEUTRALITY

It is the commitment of Living Habitats to construct carbon neutral spaces. Recent reports on global warming have highlighted the importance of a shift to low carbon living. It is incumbent upon people and businesses to come together, and to co create a world that works for everyone, be it people, animals or our ecosystems. To gear up for a carbon neutral living, merely low carbon during construction is not enough. We require systems that perpetuate and facilitate low carbon living such as growing your own food, having waste water system that does not consume energy or having solar PV for energy needs.



Zero food miles are one of the ways to stay healthy and carbon neutral. Close the loop that is healthy for you and the planet.



📍 **Corporate Office: Mumbai**

171, Living Habitats Pvt. Ltd., Mittal Towers, A Wing, 17th Floor,
Nariman Point, Mumbai - 400 021, Maharashtra, India.

☎ Tel :+91-22-49717539 | 49745617 | 22883731.

📍 **Branch Office: Hyderabad**

No.302, 3rd Floor, Hymavathy Residency, Plot No.14, Green Hamlet,
Silpa Park, Survey No. 58 & 61, Hitex 2nd Main Road,
Kondapur, Hyderabad 500084.

☎ +91-96190 46533

📍 **Site Address:**

Plot No:7, Block No : 24/A,
Lahari Greenpark Resorts, Bhanur, Near Shankerpally,
Hyderabad, Telangana-502305, India.

☎ +91-91361 23545

Email: marketing@living-habitats.com | www.living-habitats.com    